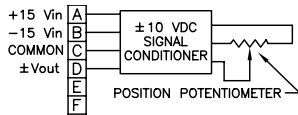


HX-P1010 Series Installation Guide

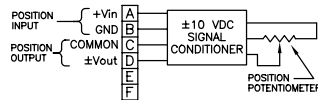
Wiring and Circuit Diagram

Model HX-P1010



Excitation Voltage: +15 VDC & -15 VDC (±5%)
 Output Impedance..... 1.0 Ω max.
 Output Load..... 5KΩ min.

Models HX-P1010-xx-SI



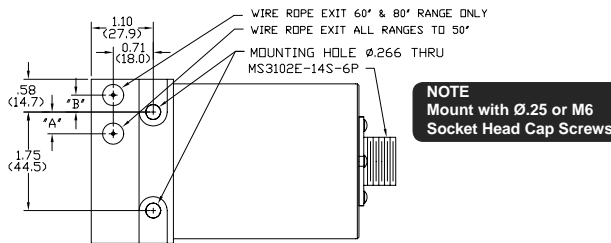
See **Table 1** at below for position input voltage.

Table 1

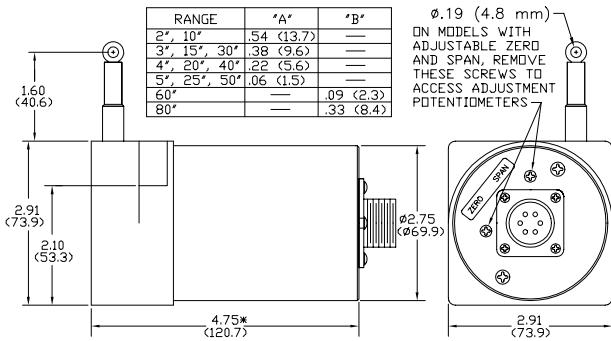
| Option Designator | Input Voltage |
|-------------------|---------------|
| SI5 | 5 ±0.5 VDC |
| SI12 | 12 ±0.5 VDC |
| SI15 | 15 ±0.5 VDC |
| SI24 | 24 ±1.0 VDC |

With small blade type screwdriver (.105" max. blade width X .023" max. blade thickness), adjust the *Zero* and *Span* controls on the transducer to set the zero and maximum output voltages. **Note:** The *Zero* and *Span* controls are somewhat interactive and may require several iterations to obtain the desired zero and maximum voltage settings. Extend the transducer cable (on angular position transducers, rotate shaft) to the desired zero position (must be within 10% to 90% of the total range). Adjust the *Zero* control to give a zero voltage output. Then extend the cable (on angular position transducers, rotate shaft) to the desired maximum position in the direction of longest possible travel (either positive or negative) from the zero position. To obtain maximum output voltage magnitude this position must lie within 50% to 100% of the longest possible travel. Adjust the *Span* control to the output voltage magnitude required (+ or - 10 VDC maximum). Recheck the zero and span settings and readjust if necessary.

Dimensional Information



NOTE
Mount with Ø.25 or M6 Socket Head Cap Screws.



| RANGE | "A" | "B" |
|--------------|------------|-----------|
| 2", 10" | .54 (13.7) | --- |
| 3", 15", 30" | .38 (9.6) | --- |
| 4", 20", 40" | .22 (5.6) | --- |
| 5", 25", 50" | .06 (1.5) | --- |
| 60" | --- | .09 (2.3) |
| 80" | --- | .33 (8.4) |

Ø.19 (4.8 mm)
 ON MODELS WITH ADJUSTABLE ZERO AND SPAN, REMOVE THESE SCREWS TO ACCESS ADJUSTMENT POTENTIOMETERS

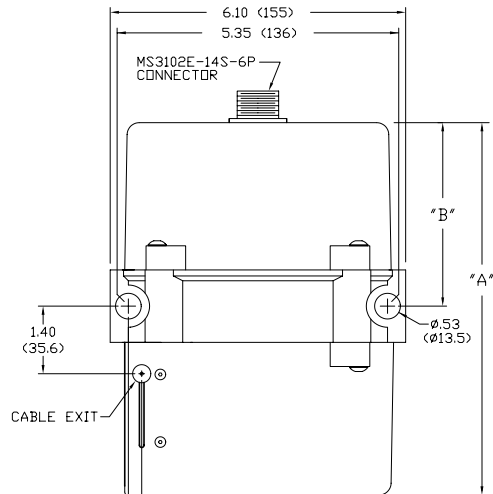
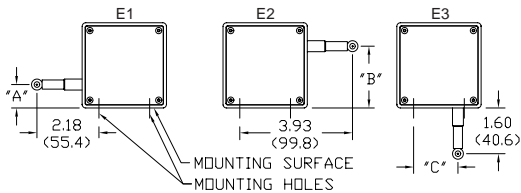
*5.62 (142.9) ON "HX-V" AND "HX-VP" SERIES

Alternate Wire Rope Exit

Note: Dimensions in brackets are millimeters.

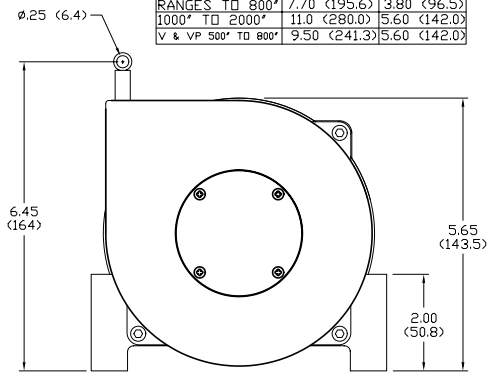
| RANGE | "A" | "B" | "C" |
|--------------|-------------|-------------|-------------|
| 2", 10" | 1.12 (28.4) | 1.79 (45.5) | 1.21 (30.7) |
| 3", 15", 30" | .96 (24.4) | 1.95 (49.5) | 1.37 (34.8) |
| 4", 20", 40" | .80 (20.3) | 2.11 (53.6) | 1.53 (38.9) |
| 5", 25", 50" | .64 (16.3) | 2.27 (57.7) | 1.69 (42.9) |
| 60" | .49 (12.4) | 2.42 (61.5) | 1.84 (46.7) |
| 80" | .25 (6.4) | 2.66 (67.6) | 2.08 (52.8) |

Alternate Wire Rope Exit



NOTE
Mount with Ø.50 or M12 Socket Head Cap Screws

| RANGE | DIM "A" | DIM "B" |
|---------------------|--------------|--------------|
| RANGES TO 800" | 7.70 (195.6) | 3.80 (96.5) |
| 1000" TO 2000" | 11.0 (280.0) | 5.60 (142.0) |
| V & VP 500" TO 800" | 9.50 (241.3) | 5.60 (142.0) |



DIMENSIONS IN BRACKETS ARE MILLIMETERS

Alternate Wire Rope Exit

